
Cable ID UPC-5004E-SOL	Summary PASS	Test Limit TIA Cat 5e Channel	Length 274 ft	Headroom 5.1 dB (NEXT)	Date / Time 06/09/2014 02:55 PM
----------------------------------	------------------------	---	-------------------------	----------------------------------	---

Total Length:	274 ft
Number of Reports:	1
Number of Passing Reports:	1
Number of Failing Reports:	0
Number of Warning Reports:	0
Documentation Only:	0



Cable ID: UPC-5004E-SOL

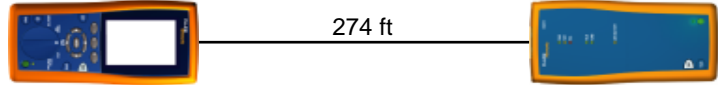
Date / Time: 06/09/2014 02:55:10 PM
Headroom 5.1 dB (NEXT 36-45)
Test Limit: TIA Cat 5e Channel
 Cable Type: Cat 5e UTP
 Calibration Date: 06/04/2013

Operator: Your Name
 Software Version: 2.7400
 Limits Version: 1.9300
 NVP: 69.0%

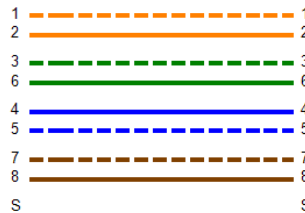
Test Summary: PASS

Model: DTX-1800
 Main S/N: 2433075
 Remote S/N: 2433076
 Main Adapter: DTX-CHA002
 Remote Adapter: DTX-CHA002

Length (ft), Limit 328	[Pair 78]	274
Prop. Delay (ns), Limit 555	[Pair 36]	416
Delay Skew (ns), Limit 50	[Pair 36]	12
Resistance (ohms)	[Pair 45]	25.2
Insertion Loss Margin (dB)	[Pair 45]	2.4
Frequency (MHz)	[Pair 45]	100.0
Limit (dB)	[Pair 45]	24.0

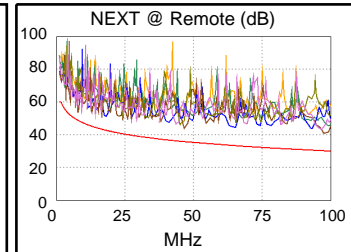
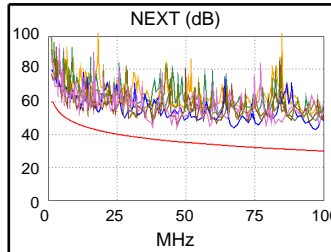


Wire Map (T568B)
PASS

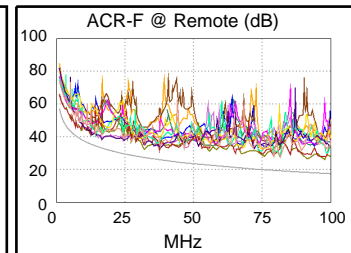
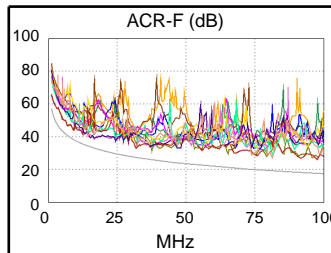


Worst Case Margin Worst Case Value

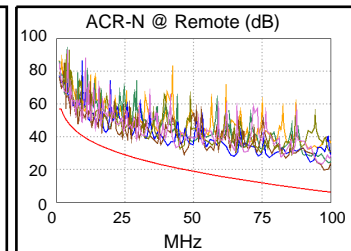
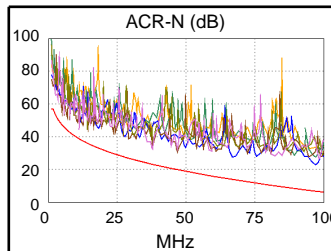
PASS	MAIN	SR	MAIN	SR
Worst Pair	36-45	36-45	12-78	36-45
NEXT (dB)	7.5	5.1	12.9	10.6
Freq. (MHz)	6.9	7.8	97.0	97.5
Limit (dB)	49.7	48.8	30.3	30.3
Worst Pair	45	45	12	45
PS NEXT (dB)	8.8	7.1	14.6	11.6
Freq. (MHz)	37.8	7.8	97.0	97.5
Limit (dB)	34.3	45.8	27.3	27.3



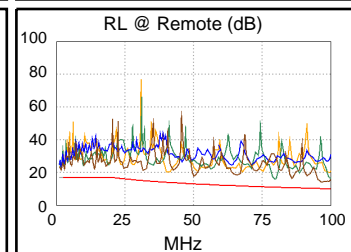
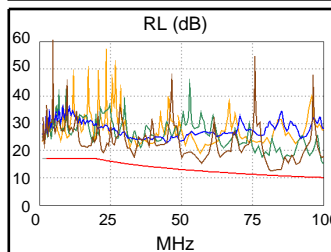
PASS	MAIN	SR	MAIN	SR
Worst Pair	45-36	36-45	45-36	36-45
ACR-F (dB)	5.1	4.9	8.4	8.2
Freq. (MHz)	32.0	32.0	97.5	97.5
Limit (dB)	27.3	27.3	17.6	17.6
Worst Pair	78	78	45	45
PS ACR-F (dB)	5.9	5.7	8.7	10.8
Freq. (MHz)	16.5	14.3	79.3	97.5
Limit (dB)	30.1	31.3	16.4	14.6



N/A	MAIN	SR	MAIN	SR
Worst Pair	36-45	36-45	12-78	36-45
ACR-N (dB)	7.9	5.4	16.2	13.1
Freq. (MHz)	6.9	7.8	97.0	97.5
Limit (dB)	43.8	42.6	6.7	6.6
Worst Pair	45	45	12	45
PS ACR-N (dB)	9.8	7.4	17.2	14.1
Freq. (MHz)	37.8	7.8	97.0	97.5
Limit (dB)	20.1	39.6	3.7	3.6



PASS	MAIN	SR	MAIN	SR
Worst Pair	78	78	78	78
RL (dB)	1.6	3.8	1.6	3.8
Freq. (MHz)	81.3	96.0	81.3	96.0
Limit (dB)	10.9	10.2	10.9	10.2



Compliant Network Standards:
 10BASE-T 100BASE-TX 100BASE-T4
 1000BASE-T ATM-25 ATM-51
 ATM-155 100VG-AnyLan TR-4
 TR-16 Active TR-16 Passive