



Cable ID: FPC-5004E-SOL

Date / Time: 09/29/2015 01:52:27 □□

Headroom 1.3 dB (NEXT 36-45)

Test Limit: TIA Cat 5e Channel

Cable Type: Cat 5e FTP

Calibration Date: 06/04/2013

Operator: JACK

Software Version: 2.7400

Limits Version: 1.9300

NVP: 69.0%

Test Summary: PASS

Model: DTX-1800

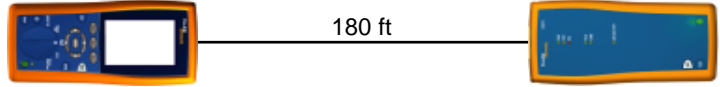
Main S/N: 2433075

Remote S/N: 2433076

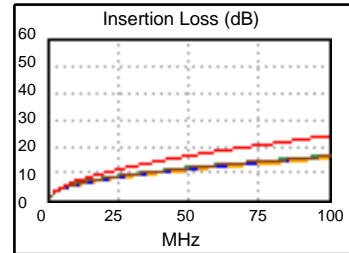
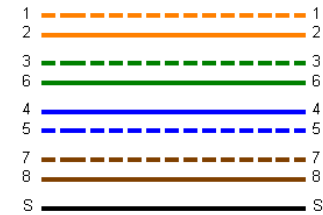
Main Adapter: DTX-CHA002

Remote Adapter: DTX-CHA002

Length (ft), Limit 328	[Pair 12]	180
Prop. Delay (ns), Limit 555	[Pair 36]	278
Delay Skew (ns), Limit 50	[Pair 36]	12
Resistance (ohms)	[Pair 12]	16.8
Insertion Loss Margin (dB)	[Pair 36]	7.3
Frequency (MHz)	[Pair 36]	100.0
Limit (dB)	[Pair 36]	24.0

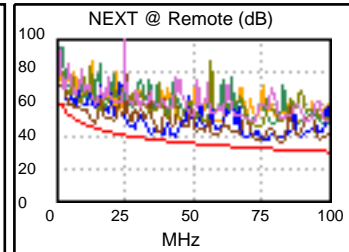
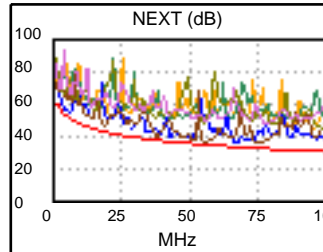


Wire Map (T568B)
PASS

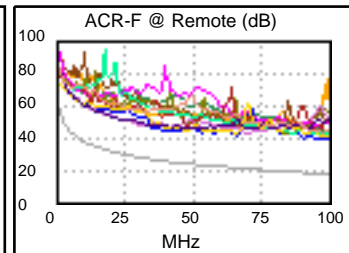
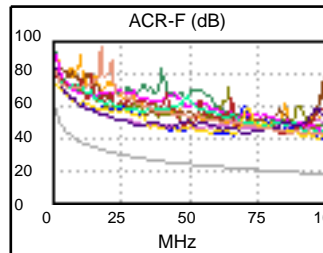


Worst Case Margin Worst Case Value

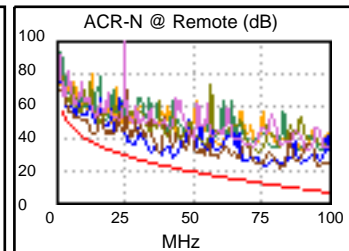
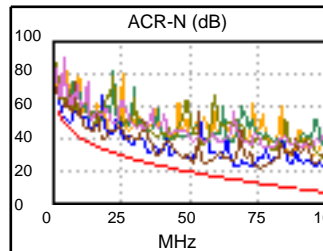
PASS	MAIN	SR	MAIN	SR
Worst Pair	36-45	12-78	36-45	36-45
NEXT (dB)	1.3	2.4	3.1	4.1
Freq. (MHz)	51.3	34.5	76.0	82.5
Limit (dB)	35.1	38.0	32.1	31.5
Worst Pair	45	78	36	36
PS NEXT (dB)	4.0	5.2	6.0	6.9
Freq. (MHz)	51.3	34.5	76.0	82.5
Limit (dB)	32.1	35.0	29.1	28.5



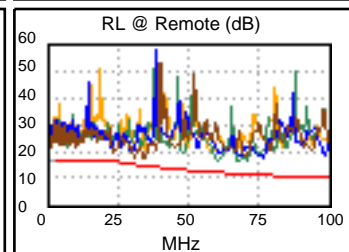
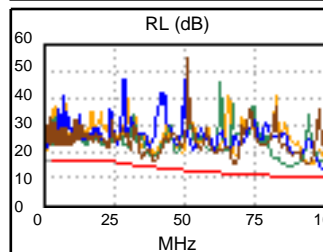
PASS	MAIN	SR	MAIN	SR
Worst Pair	12-78	12-78	12-78	12-78
ACR-F (dB)	19.4	18.6	22.0	21.3
Freq. (MHz)	47.5	39.3	98.5	97.8
Limit (dB)	23.9	25.5	17.5	17.6
Worst Pair	78	78	78	78
PS ACR-F (dB)	18.2	18.1	23.2	23.3
Freq. (MHz)	1.0	1.0	98.5	97.3
Limit (dB)	54.4	54.4	14.5	14.6



N/A	MAIN	SR	MAIN	SR
Worst Pair	12-78	36-45	12-78	36-45
ACR-N (dB)	3.6	4.8	14.6	11.1
Freq. (MHz)	3.9	13.1	100.0	82.5
Limit (dB)	49.4	36.9	6.1	9.9
Worst Pair	78	36	78	36
PS ACR-N (dB)	6.1	7.1	16.9	13.5
Freq. (MHz)	3.9	13.3	100.0	82.5
Limit (dB)	46.4	33.8	3.1	6.9



PASS	MAIN	SR	MAIN	SR
Worst Pair	78	78	45	36
RL (dB)	2.3	2.3	3.3	4.0
Freq. (MHz)	38.8	34.3	98.8	60.8
Limit (dB)	14.1	14.7	10.1	12.2



Compliant Network Standards:

10BASE-T	100BASE-TX	100BASE-T4
1000BASE-T	ATM-25	ATM-51
ATM-155	100VG-AnyLan	TR-4
TR-16 Active	TR-16 Passive	