



Cable ID: UPC-5004E-SOL

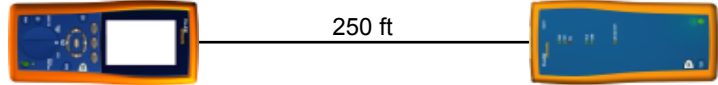
Date / Time: 10/31/2014 01:49:29 PM
Headroom 8.6 dB (NEXT 12-78)
 Test Limit: TIA Cat 5e Channel
 Cable Type: Cat 5e UTP
 Calibration Date: 06/04/2013

Operator: Your Name
 Software Version: 2.7400
 Limits Version: 1.9300
 NVP: 69.0%

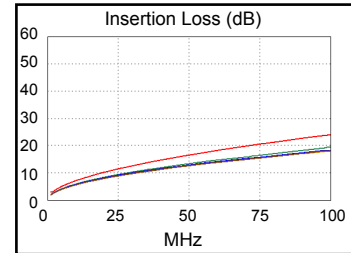
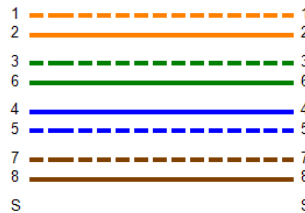
Test Summary: PASS

Model: DTX-1800
 Main S/N: 2433075
 Remote S/N: 2433076
 Main Adapter: DTX-CHA002
 Remote Adapter: DTX-CHA002

Length (ft), Limit 328	[Pair 78]	250
Prop. Delay (ns), Limit 555	[Pair 36]	381
Delay Skew (ns), Limit 50	[Pair 36]	13
Resistance (ohms)	[Pair 36]	22.6
Insertion Loss Margin (dB)	[Pair 36]	4.6
Frequency (MHz)	[Pair 36]	100.0
Limit (dB)	[Pair 36]	24.0

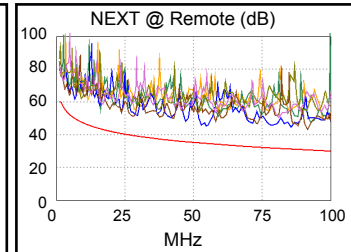
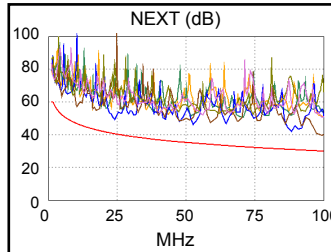


Wire Map (T568B)
PASS

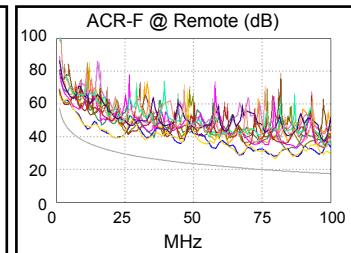
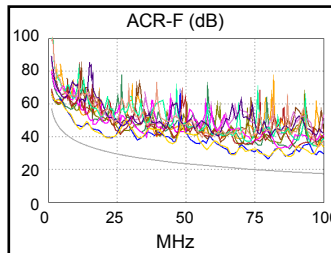


Worst Case Margin Worst Case Value

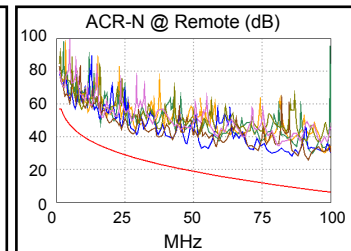
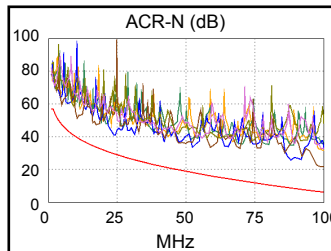
PASS	MAIN	SR	MAIN	SR
Worst Pair	12-78	12-78	36-45	36-45
NEXT (dB)	8.6	10.6	9.6	12.5
Freq. (MHz)	23.8	54.8	99.0	91.5
Limit (dB)	40.7	34.6	30.2	30.7
Worst Pair	78	12	45	45
PS NEXT (dB)	11.4	12.6	12.2	14.9
Freq. (MHz)	23.8	29.1	99.0	91.8
Limit (dB)	37.7	36.2	27.2	27.7



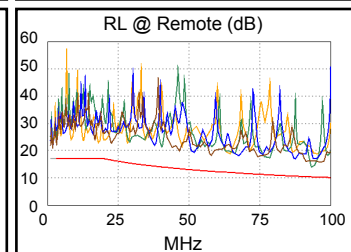
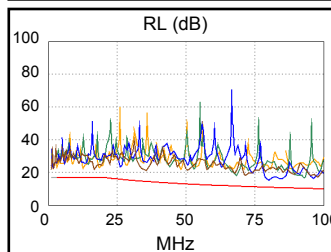
PASS	MAIN	SR	MAIN	SR
Worst Pair	12-78	78-12	12-78	78-12
ACR-F (dB)	7.1	7.1	7.1	7.1
Freq. (MHz)	79.8	79.8	80.0	80.0
Limit (dB)	19.4	19.4	19.3	19.3
Worst Pair	78	12	78	12
PS ACR-F (dB)	10.1	10.0	10.1	10.0
Freq. (MHz)	79.8	80.0	80.0	80.0
Limit (dB)	16.4	16.3	16.3	16.3



N/A	MAIN	SR	MAIN	SR
Worst Pair	12-78	36-45	36-45	36-45
ACR-N (dB)	11.1	12.8	15.4	17.8
Freq. (MHz)	23.8	4.6	99.0	91.5
Limit (dB)	29.6	47.7	6.3	7.9
Worst Pair	12	36	36	36
PS ACR-N (dB)	13.9	14.2	16.8	19.7
Freq. (MHz)	23.9	4.5	99.0	91.5
Limit (dB)	26.5	45.0	3.3	4.9



PASS	MAIN	SR	MAIN	SR
Worst Pair	45	36	45	36
RL (dB)	4.2	3.5	4.2	3.5
Freq. (MHz)	80.0	93.5	80.0	93.5
Limit (dB)	11.0	10.3	11.0	10.3



Compliant Network Standards:
 10BASE-T 100BASE-TX 100BASE-T4
 1000BASE-T ATM-25 ATM-51
 ATM-155 100VG-AnyLan TR-4
 TR-16 Active TR-16 Passive