



**Cable ID: UPC-5004E-SOL**

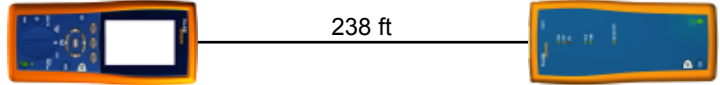
Date / Time: 05/15/2014 02:46:06 PM  
**Headroom 8.1 dB (NEXT 36-45)**  
**Test Limit: TIA Cat 5e Channel**  
 Cable Type: Cat 5e UTP  
 Calibration Date: 06/04/2013

Operator: Your Name  
 Software Version: 2.7400  
 Limits Version: 1.9300  
 NVP: 69.0%

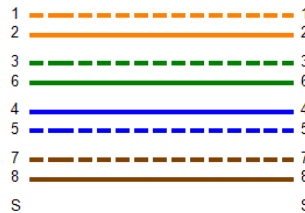
**Test Summary: PASS**

Model: DTX-1800  
 Main S/N: 2433075  
 Remote S/N: 2433076  
 Main Adapter: DTX-CHA002  
 Remote Adapter: DTX-CHA002

Length (ft), Limit 328	[Pair 78]	238
Prop. Delay (ns), Limit 555	[Pair 36]	360
Delay Skew (ns), Limit 50	[Pair 36]	9
Resistance (ohms)	[Pair 45]	21.7
Insertion Loss Margin (dB)	[Pair 36]	4.6
Frequency (MHz)	[Pair 36]	100.0
Limit (dB)	[Pair 36]	24.0

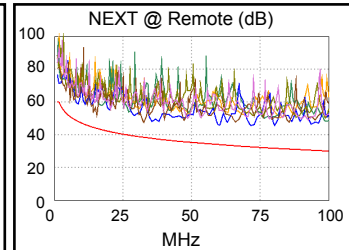
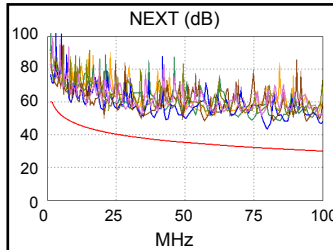


Wire Map (T568B)  
**PASS**

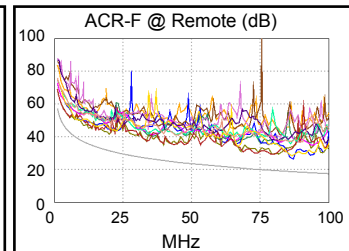
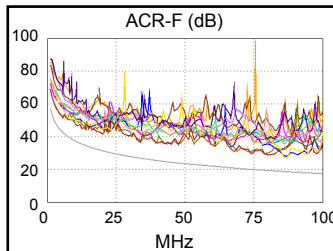


Worst Case Margin Worst Case Value

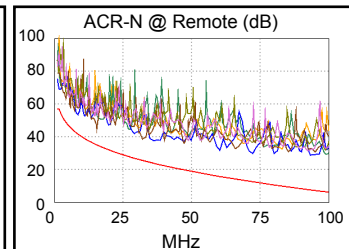
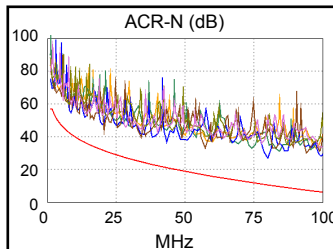
<b>PASS</b>	MAIN	SR	MAIN	SR
Worst Pair	36-45	36-45	12-78	12-78
<b>NEXT (dB)</b>	10.5	8.1	11.7	12.7
Freq. (MHz)	20.5	15.4	80.0	72.0
Limit (dB)	41.8	43.9	31.7	32.5
Worst Pair	12	45	12	12
<b>PS NEXT (dB)</b>	13.0	10.4	14.3	15.3
Freq. (MHz)	1.9	15.4	80.0	80.5
Limit (dB)	55.9	40.9	28.7	28.7



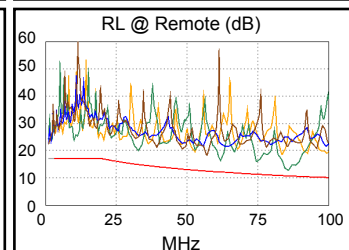
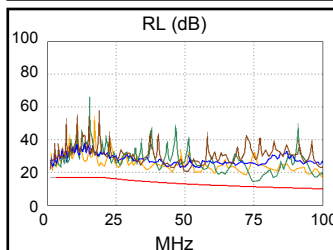
<b>PASS</b>	MAIN	SR	MAIN	SR
Worst Pair	78-12	12-78	78-12	12-78
<b>ACR-F (dB)</b>	7.8	7.3	7.8	7.3
Freq. (MHz)	86.5	86.5	86.5	86.5
Limit (dB)	18.7	18.7	18.7	18.7
Worst Pair	45	78	12	78
<b>PS ACR-F (dB)</b>	10.2	10.4	10.6	10.4
Freq. (MHz)	34.0	86.5	86.5	86.5
Limit (dB)	23.8	15.7	15.7	15.7



<b>N/A</b>	MAIN	SR	MAIN	SR
Worst Pair	36-45	36-45	12-78	12-78
<b>ACR-N (dB)</b>	12.5	9.8	16.4	21.3
Freq. (MHz)	20.5	15.4	80.0	95.8
Limit (dB)	31.5	35.0	10.5	7.0
Worst Pair	12	45	12	78
<b>PS ACR-N (dB)</b>	13.8	12.1	19.4	21.9
Freq. (MHz)	1.8	15.4	80.0	93.3
Limit (dB)	53.4	32.0	7.5	4.5



<b>PASS</b>	MAIN	SR	MAIN	SR
Worst Pair	36	36	36	36
<b>RL (dB)</b>	3.2	1.9	3.2	1.9
Freq. (MHz)	74.8	85.3	76.3	85.3
Limit (dB)	11.3	10.7	11.2	10.7



Compliant Network Standards:  
 10BASE-T      100BASE-TX      100BASE-T4  
 1000BASE-T    ATM-25            ATM-51  
 ATM-155       100VG-AnyLan    TR-4  
 TR-16 Active    TR-16 Passive